

OnCell Central Manager User's Manual

Version 1.4, June 2021

www.moxa.com/product



© 2021 Moxa Inc. All rights reserved.

OnCell Central Manager User's Manual

The software described in this manual is furnished under a license agreement and may be used only in accordance with the terms of that agreement.

Copyright Notice

© 2021 Moxa Inc. All rights reserved.

Trademarks

The MOXA logo is a registered trademark of Moxa Inc.
All other trademarks or registered marks in this manual belong to their respective manufacturers.

Disclaimer

Information in this document is subject to change without notice and does not represent a commitment on the part of Moxa.

Moxa provides this document as is, without warranty of any kind, either expressed or implied, including, but not limited to, its particular purpose. Moxa reserves the right to make improvements and/or changes to this manual, or to the products and/or the programs described in this manual, at any time.

Information provided in this manual is intended to be accurate and reliable. However, Moxa assumes no responsibility for its use, or for any infringements on the rights of third parties that may result from its use.

This product might include unintentional technical or typographical errors. Changes are periodically made to the information herein to correct such errors, and these changes are incorporated into new editions of the publication.

Technical Support Contact Information

www.moxa.com/support

Moxa Americas

Toll-free: 1-888-669-2872
Tel: +1-714-528-6777
Fax: +1-714-528-6778

Moxa Europe

Tel: +49-89-3 70 03 99-0
Fax: +49-89-3 70 03 99-99

Moxa India

Tel: +91-80-4172-9088
Fax: +91-80-4132-1045

Moxa China (Shanghai office)

Toll-free: 800-820-5036
Tel: +86-21-5258-9955
Fax: +86-21-5258-5505

Moxa Asia-Pacific

Tel: +886-2-8919-1230
Fax: +886-2-8919-1231

Table of Contents

1. Introduction	1-1
Key Features	1-2
Overview	1-2
Basic Concepts	1-2
OnCell Central Manager Hardware Topology	1-3
Moxa Device Compatibilities	1-3
System Requirements	1-4
Minimum Hardware Requirements	1-4
Software Requirements	1-4
2. Configuring Your OnCell and Connected Devices	2-1
OnCell Central Manager Settings	2-2
Configuration	2-2
Control Port	2-2
Service Forwarding	2-3
3. Installing OnCell Central Manager	3-1
Installing OCM and OCM Browser	3-2
Using the OCM Server Tool	3-3
OCM Server Tool Settings	3-4
4. Configuring OnCell Central Manager	4-1
Launching OnCell Central Manager	4-2
Server Mode	4-3
Overview	4-3
Port Information	4-4
Change Password	4-4
Managing Device Groups	4-5
Managing User Accounts	4-10
Managing the IP Blocklist	4-12
Device Mode	4-12
Device View	4-12
Group View	4-13
Batch Configuration and Firmware Upgrade in Devices	4-13
User Ports	4-14
Service Forwarding	4-14
Firmware Upgrade	4-15
Remote SMS Control (available only on the OnCell G3150A-LTE)	4-16
Managing an OnCell Device	4-18
Device Logout	4-23

Introduction

OnCell Central Manager is a powerful tool that makes it possible for two sites configured with **Private IP** addresses to access each other over a public network. More specifically, Ethernet hosts with Internet access that are connected to the OnCell Central Manager can be configured to communicate with devices connected to an OnCell unit.

The following topics are covered in this chapter:

- ❑ **Key Features**
- ❑ **Overview**
- ❑ **Basic Concepts**
- ❑ **OnCell Central Manager Hardware Topology**
- ❑ **Moxa Device Compatibilities**
- ❑ **System Requirements**
 - Minimum Hardware Requirements
 - Software Requirements

Key Features

- Network administrators can manage up to 2000 OnCell devices and allow up to 200 simultaneous data connections between hosts* and serial/Ethernet devices with OnCell Central Manager.
- Cost-effective private IP solution
- Visual overview of device status and flexible monitoring on various platforms
- Grouping of user accounts and devices for effective access control
- Ability to manage, group, monitor, configure, and upgrade the firmware of all your devices from OnCell Central Manager

*Control center computers

Overview

OnCell Central Manager makes it possible for multiple sites configured with private IP addresses to access each other over a public network. The sites connect to the OnCell Central Manager, which assigns port numbers to each site, thereby making the serial and/or Ethernet devices connected to an OnCell device accessible to hosts over the Internet. OnCell Central Manager allows a host to monitor the connection status of an OnCell device and the devices connected to it. OnCell Central Manager helps you reduce maintenance costs by making it convenient to diagnose and solve problems from a central site thereby reducing the number of trips engineers have to make to remote locations.

OnCell Central Manager supports the following modes of communication:

1. Direct communication with private IPs hidden from the public domain
2. Connection over the Internet to OnCell devices with private IP SIM cards



ATTENTION

The following terms are used throughout this manual:

- **OnCell** or **OnCell device** refers to an OnCell hardware product (e.g., OnCell G3150A-LTE).
- **Connected device** refers to an Ethernet device connected directly to an OnCell.
- **OnCell Central Manager** or **OCM** refers to a software utility, which is the topic of this manual.
- **Host** refers to a control center computer.

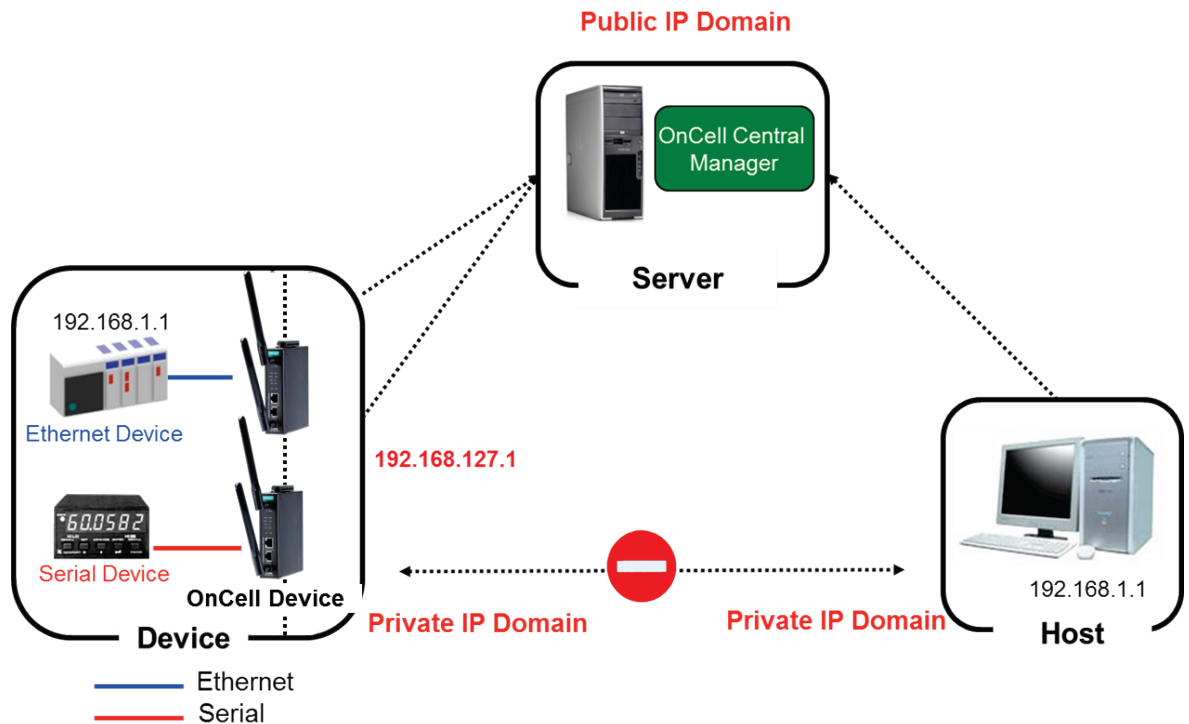
Basic Concepts

The OnCell Central Manager is designed based on the following:

- Both the host (control center computer) and OnCell devices connect with the OnCell Central Server
- OnCell Central Server designates ports on which a host can connect to serial and/or Ethernet devices attached to an OnCell device
- OnCell Central Manager allows the host to monitor the connection status of OnCell devices as well as their connected devices

OnCell Central Manager Hardware Topology

OnCell Central Manager allows private IP hosts and OnCell devices to communicate with each other over a public network.



What are the problems associated with having private IP addresses?

- Most Internet Service Providers (ISP) only offer private IP address SIM cards for mobile devices due to the limited availability of public addresses
- Private IP addresses are hidden from the public domain
- If both the host and the modem have private IPs, they will not be able to "see" each other on a public network and thus cannot communicate with each other.

Moxa Device Compatibilities

OnCell Central Manager v2.3 is supported by the following OnCell and WDR models:

- OnCell G3100 Series
- OnCell G3100-HSPA Series
- OnCell G3111 Series
- OnCell G3111-HSPA Series
- OnCell 5000-HSPA Series
- OnCell G3470A-LTE Series
- OnCell G3150A-LTE Series
- WDR-3124A Series

OnCell Central Manager v2.4.1 is supported by the following OnCell models with support for Moxa Protocol connection encryption:

- OnCell 3120-LTE-1 Series

System Requirements

Minimum Hardware Requirements

- Intel® Core i5 or above CPU (64-bit is recommended)
- 4 GB RAM (or higher)
- 500 MB of free disk space (minimum)

Software Requirements

OnCell Central Manager is compatible with the latest Windows operating systems, including Windows 64-bit operating systems.

Compatible Operating Systems

- **32-bit OS:** Windows Server 2012, Windows 7, Windows 8, Windows 10
- **64-bit OS:** Windows Server 2012, Windows 7, Windows 8, Windows 10



IMPORTANT!

Windows XP is no longer supported by Microsoft. Moxa recommends that you use Windows 7 or above.

Browsers

- OnCell Central Manager Browser

NOTE Adobe Flash is required for installing OnCell Central Manager. Adobe Flash Player is no longer supported by Adobe and all standard browsers since January 12th, 2021.

Configuring Your OnCell and Connected Devices

In this chapter, we describe how to use the web console utility of an OnCell device to establish a connection with the OnCell Central Manager and configure other devices to connect to the OnCell device.

The following topics are covered in this chapter:

- ❑ **OnCell Central Manager Settings**
 - Configuration
 - Control Port
- ❑ **Service Forwarding**

OnCell Central Manager Settings

After opening the web console configuration utility for the OnCell device, click on the **OnCell Central Manager Settings** link in the navigation panel and then click **OnCell Central Manager** to open the settings page shown below:

OnCell Central Manager

Configuration

OnCell Central Manager Enable ▾

Manager IP

Auto reconnect period (10 - 1000 secs)

Control Port

Management information port

Management configuration port

Telnet port

Operation mode data port

Operation mode cmd port

The **OnCell Central Manager** page has two sections—**Configuration** and **Control Port**.

Configuration

Setting	Description	Factory Default
OnCell Central Manager	Select Enable to allow the OnCell device to connect to the OnCell Central Manager.	Disable
Manager IP	Enter the public IP address that is assigned to the OnCell Central Manager.	None
Auto reconnect period	Enter the number of seconds the OnCell device should wait before attempting to automatically reconnect to OnCell Central Manager Range: 10 to 1000	10

Control Port

Setting	Description	Factory Default
Management information port*	The TCP port used to transfer the status information of the OnCell device to the OnCell Central Manager	63201
Management configuration port*	The TCP port used to transfer configuration information from the OnCell device to OnCell Central Manager	63202
Telnet port*	The TCP port in OnCell Central Manager (the server) that is listening for a Telnet connection from OnCell devices	63203
Operation mode data port*	The operation mode data port to use when forwarding data from the OnCell device connected through LAN or serial interface to the OnCell Central Manager. The operation mode data port in the OnCell Central Manager is listening to OnCell devices.	63211
Operation mode cmd port*	This port is used to forward commands from the host to the OnCell device that is connected in operation mode through the LAN or serial interface.	63251

- *-The port number must match the information port configured in OnCell Central Manager.
- To prevent port number conflicts with other applications, we suggest using port numbers in the range 49152-65535. These port numbers can be used for private and customized services, or for temporary purposes.

Service Forwarding

To access the **Service Forwarding** configuration page, expand the **OnCell Central Manager Settings** item in the navigation panel and click **Service Forwarding**.

Service Forwarding

Service forwarding Disable ▾ (This function is for OnCell Central Manager only.)

Service forwarding port

No	<input type="checkbox"/> Act.	Protocol	Eth. Device Name	Eth. Device IP	Port	Description
1	<input type="checkbox"/>	TCP ▾	<input type="text"/>	<input type="text"/>	<input type="text"/>	<input type="text"/>
2	<input type="checkbox"/>	TCP ▾	<input type="text"/>	<input type="text"/>	<input type="text"/>	<input type="text"/>
3	<input type="checkbox"/>	TCP ▾	<input type="text"/>	<input type="text"/>	<input type="text"/>	<input type="text"/>
4	<input type="checkbox"/>	TCP ▾	<input type="text"/>	<input type="text"/>	<input type="text"/>	<input type="text"/>
5	<input type="checkbox"/>	TCP ▾	<input type="text"/>	<input type="text"/>	<input type="text"/>	<input type="text"/>
6	<input type="checkbox"/>	TCP ▾	<input type="text"/>	<input type="text"/>	<input type="text"/>	<input type="text"/>
7	<input type="checkbox"/>	TCP ▾	<input type="text"/>	<input type="text"/>	<input type="text"/>	<input type="text"/>
8	<input type="checkbox"/>	TCP ▾	<input type="text"/>	<input type="text"/>	<input type="text"/>	<input type="text"/>

Settings Specific to OnCell

The following settings that govern the connection between an OnCell device and OnCell Central Manager:

Setting	Description	Factory Default
Service forwarding	Select Enable to allow this OnCell to forward data from its connected devices to OnCell Central Manager	Disable
Service forwarding port	The Ethernet port number used to establish an Ethernet connection between this OnCell and OnCell Central Manager	63204

Settings Specific to Connected Devices

Settings that relate to the connection between an OnCell and its connected Ethernet devices:

Setting	Description	Factory Default
Act.	Select this checkbox to activate the connection between this Ethernet device and the OnCell. Note: If Service forwarding is set to Enable , the connected device will be able to communicate with OnCell Central Manager.	unchecked
Protocol	The protocol to use for establishing a connection between the connected device and the OnCell.	TCP
Eth. Device Name	Specify a name for the connected device.	Not applicable (N/A)
Eth. Device IP	Specify the private IP address (192.168.xxx.xxx) assigned to the connected Ethernet device.	N/A
Port	Specify the Ethernet port number assigned to the connected Ethernet device.	N/A
Description	Specify a description for the connected Ethernet device.	N/A

Installing OnCell Central Manager

In this chapter, we explain how to install Moxa's OnCell Central Manager utility and quickly set up and test your network to make sure the connections are up and running.

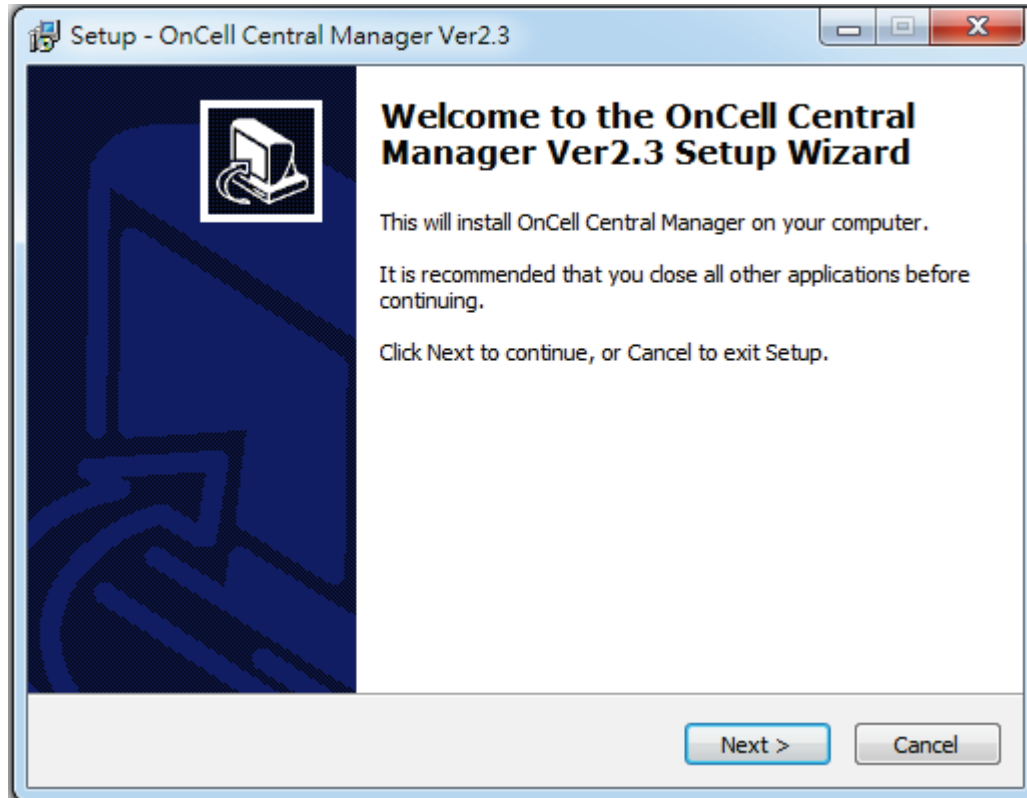
The following topics are covered in this chapter:

- ❑ **Installing OCM and OCM Browser**
- ❑ **Using the OCM Server Tool**
 - OCM Server Tool Settings

Installing OCM and OCM Browser

Download the OnCell Central Manager and OnCell Central Manager Browser executables from http://www.moxa.com/product/OnCell_Central_Manager.htm. Be sure to select the download option for the type of OS (32-bit or 64-bit) installed on your system.

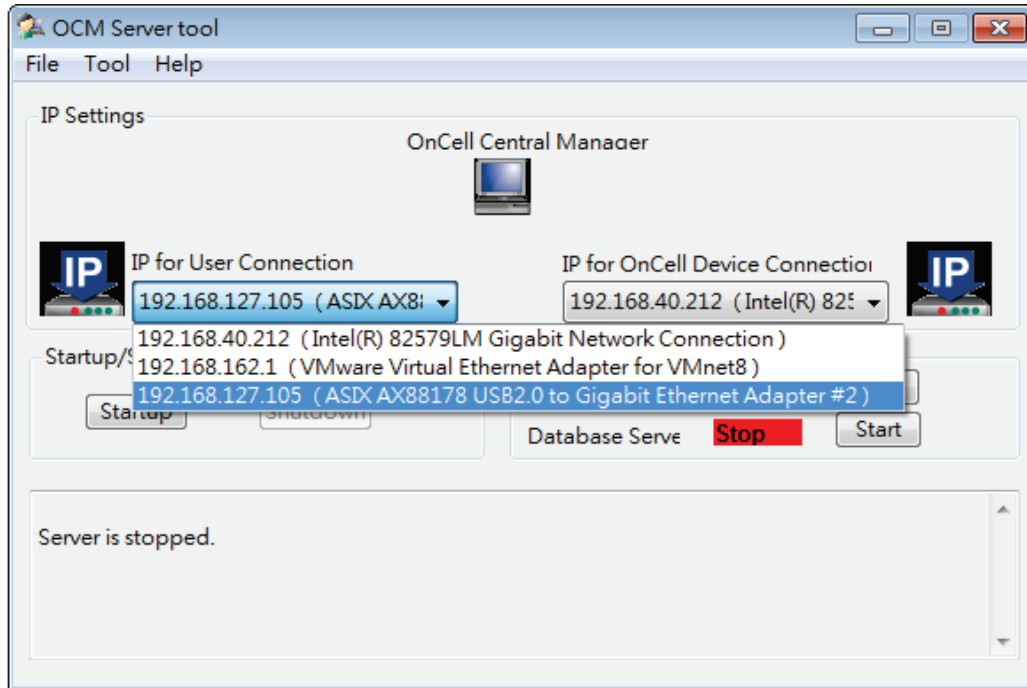
Run both the OnCell Central Manager and Browser executables and follow the onscreen instructions to install the tools.



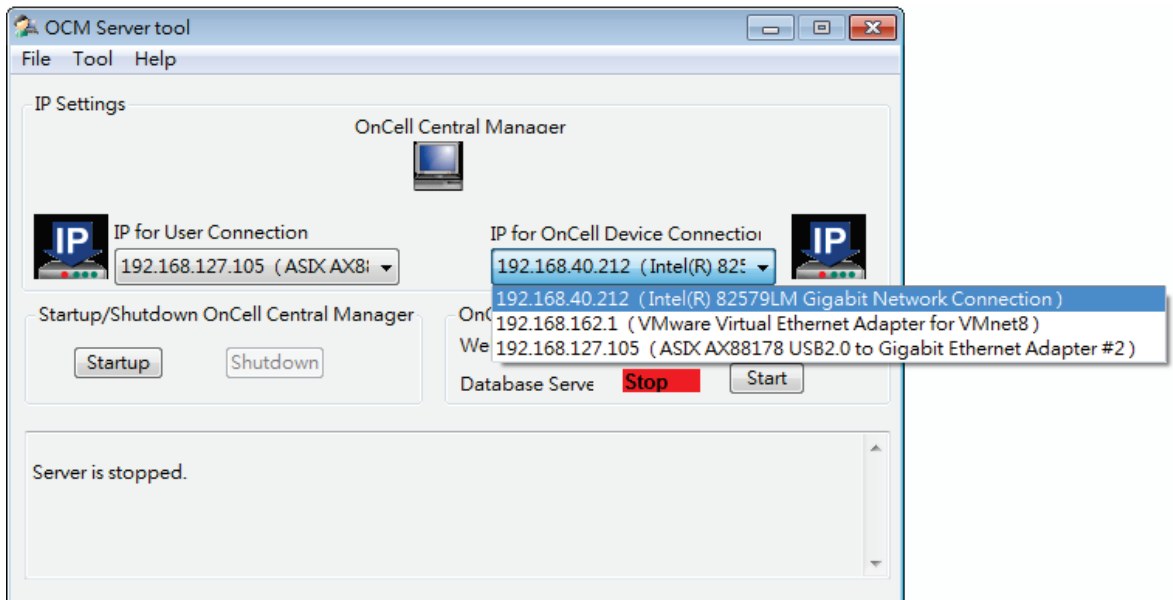
Using the OCM Server Tool

You must first configure the IP address for the OnCell Central Manager, which will be used by other computers and OnCell devices to connect to the tool.

In the Start menu select **OnCell Central Manager** to launch the server. In the **OCM Server tool**, use the **IP for User Connection** drop-down box to select an IP address for the OnCell Central Manager. This is usually a private IP address.



Use the **IP for OnCell Device Connection** drop-down box to select which IP address OnCell Central Manager will use to connect to OnCell devices. This is usually a public IP address.

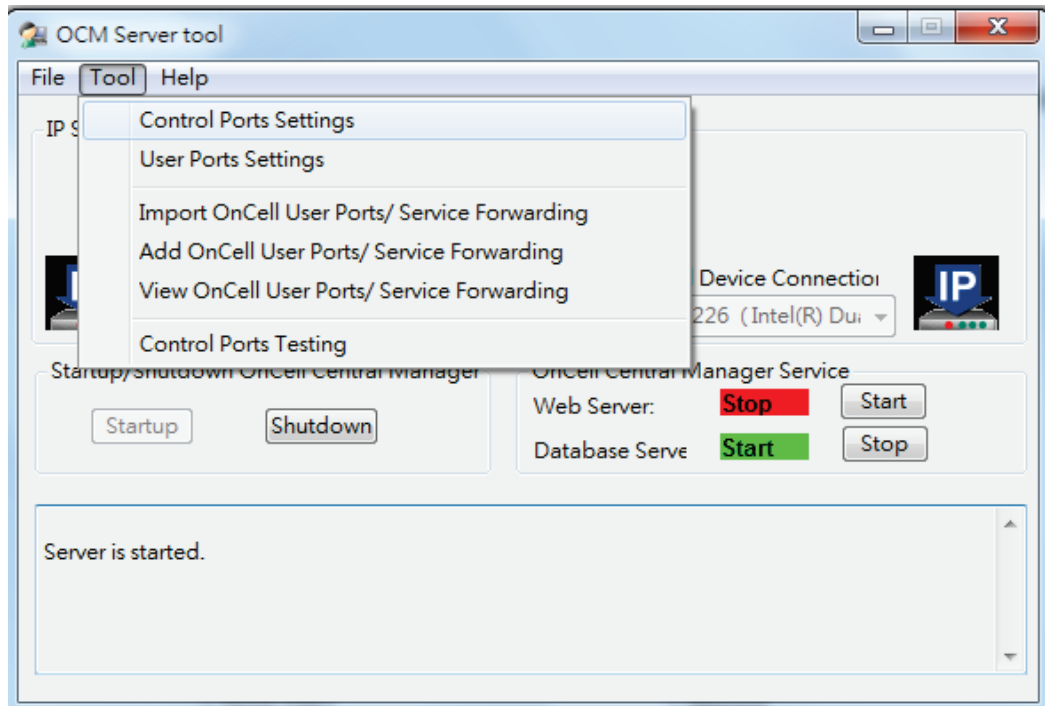


OCM Server Tool Settings

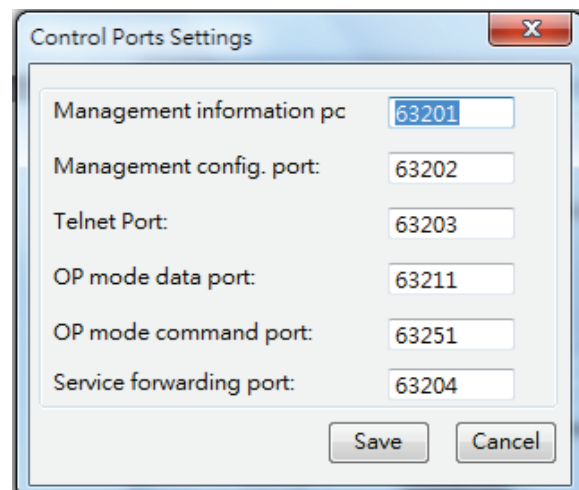
In the OCM Server tool, click on the **Tool** tab to access tools settings such as **Control Port Settings** and **User Port Settings**.

Control Port Settings

Select **Control Port Settings** to view and/or modify the OnCell Central Manager control ports.

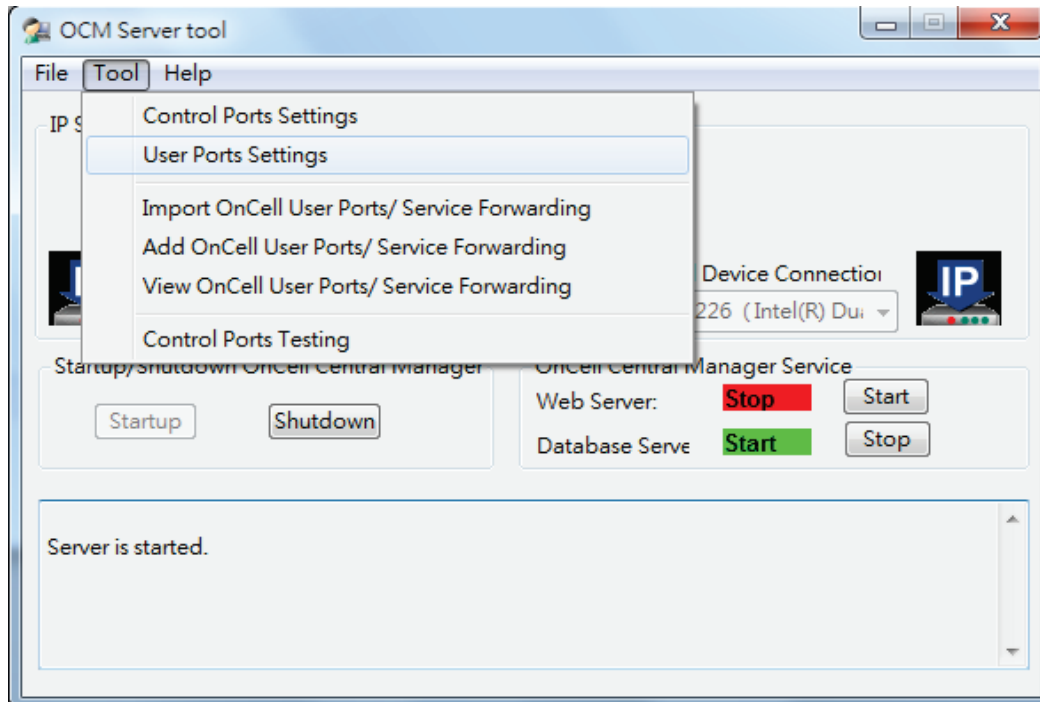


The control ports are the communication ports between OnCell Central Manager and OnCell devices. The aim is to allow OnCell Central Manager to access and manage OnCell devices. Make sure the port numbers shown here match the control port numbers in your OnCell devices.

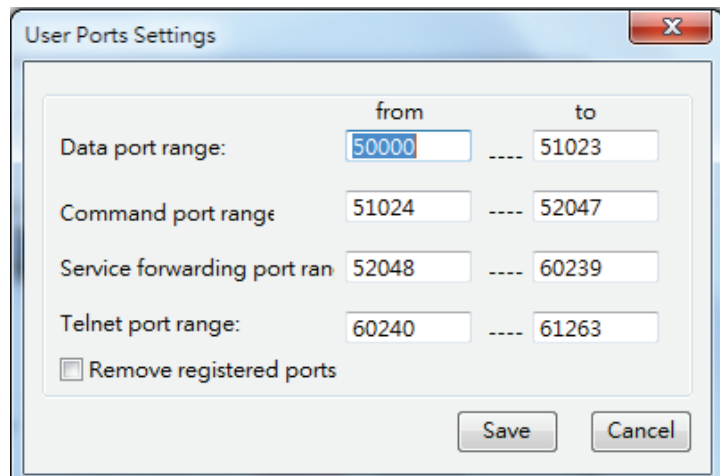


User Port Settings

Select **User Port Settings** to view and/or modify the OnCell Central Manager's user ports.



The port ranges that you specify here will be used to generate port numbers of connected devices. The port numbers will map to the TCP server ports of an Ethernet device connected to an OnCell, or serial devices directly connected to an OnCell device.



OnCell Central Manager Web Server Ports

The following table shows the ports used by OnCell Central Manager. Make sure that these port numbers are not already in use by other applications.

OnCell Central Manager Web Server ports:	
Web Server Ports	8080
OCM Service Ports	63201, 63202, 63203, 63204, 63211, 63251
OCM Monitoring Ports	63206, 63207, 63210
OnCell Central Manager Database Server ports	
Database Server	1527

NOTE The port numbers used in the screenshots in this section are for illustration purposes only. The port numbers that you can use depend on the network setup and connection status in your system.

Configuring OnCell Central Manager

In this chapter we explain the advanced functions in the OnCell Central Manager that you can use to configure, manage, and monitor devices as well as upgrade the firmware.

The following topics are covered in this chapter:

❑ **Launching OnCell Central Manager**

❑ **Server Mode**

- Overview
- Port Information
- Change Password
- Managing Device Groups
- Managing User Accounts
- Managing the IP Blocklist

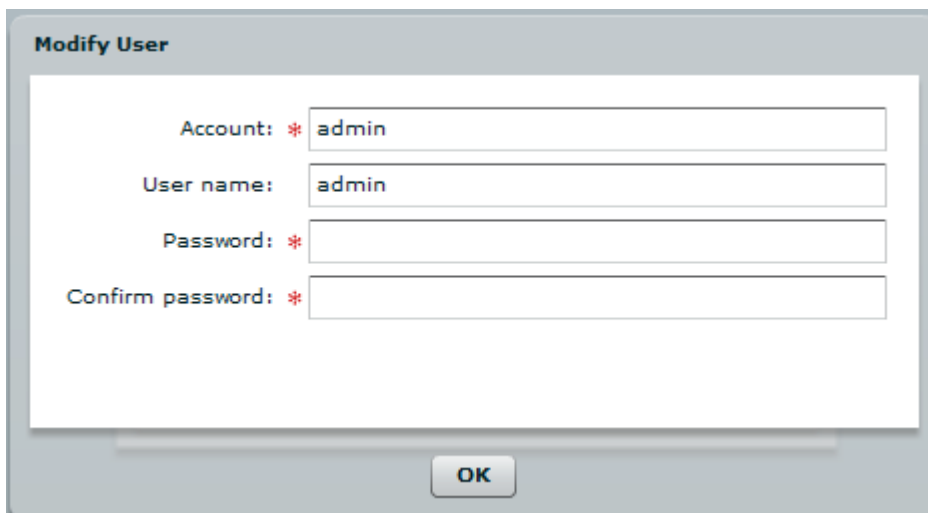
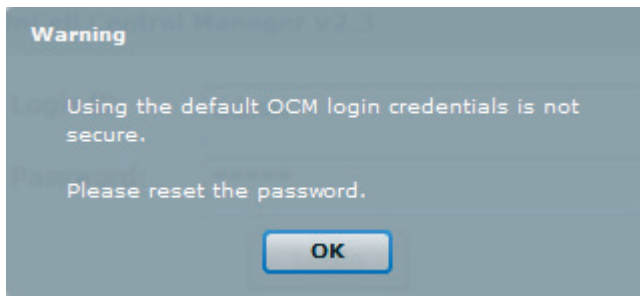
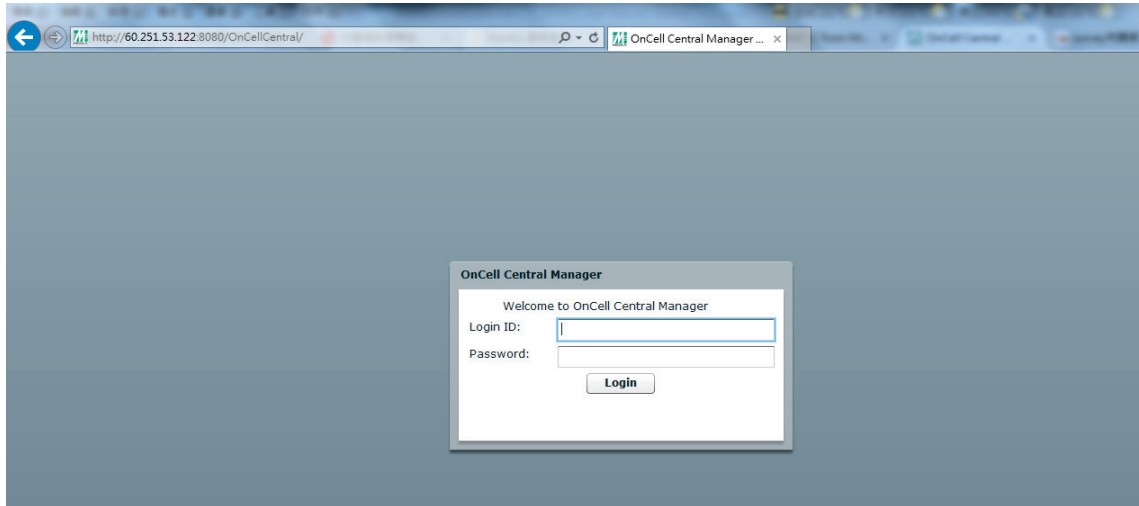
❑ **Device Mode**

- Device View
- Group View
- Batch Configuration and Firmware Upgrade in Devices
- User Ports
- Service Forwarding
- Firmware Upgrade
- Remote SMS Control (available only on the OnCell G3150A-LTE)
- Managing an OnCell Device
- Device Logout

Launching OnCell Central Manager

To access OnCell Central Manager:

1. Open the OnCell Central Manager Browser.
2. Enter the OnCell Central Manager's IP address (e.g., <http://localhost:8080>).
3. In the welcome screen, enter the **login ID** and **Password** and click **Login**.



NOTE Default user name and password:

Username: **admin**

Password **admin**

For security reasons, we strongly recommend changing the default password. You will be prompted to change the default password after your first login. Please follow the onscreen instructions to reset your account password.

To reset the password select **Server** → **Change Password**.

Server Mode

In the **Server** view, OnCell Central Manager provides the device grouping function to organize the OnCell devices into different groups. An administrator can assign different roles, give each account various access levels, and assign different access rights to the various groups. You can also view information on the OS version, connected devices and their ports, device grouping, and user accounts.

Overview

The **Overview** page displays the version and copyright details of the OnCell Central Manager tool.



Port Information

Click the **Port Information** link in the server menu to view the current port numbers for OnCell Central Manager. You can modify the port numbers using the web console on the device (see *Device Mode*). For detailed information, see *Chapter 2 Configuring Your OnCell and Connected Devices*.

View : Server ▾

- Overview
- Port Information**
- Change Password
- Device Group Management
- Account Management
- IP Blocklist Management

Port Information

Control Ports

Management information port	63201
Management configuration port	63202
Operation mode data port	63211
Operation mode command port	63251
Telnet port	63203
Service forwarding port	63204

User Ports

Data port	50000 to 51023
Command port	51024 to 52047
Service forwarding port	52048 to 60239
Telnet Port	60240 to 61263

Server Properties

Connection idle timeout for data Secs (60 to 1800)

Change Password

Use the **Change Password** function to change your account password.

Change Password

Password

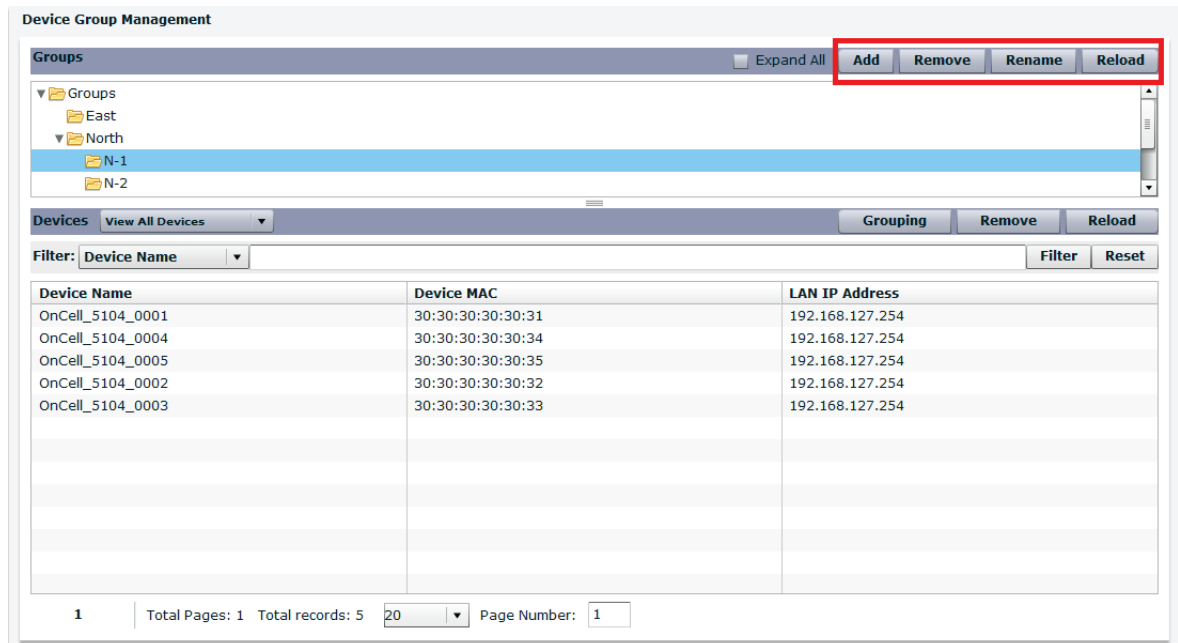
Old password:

New password:

Confirm password:

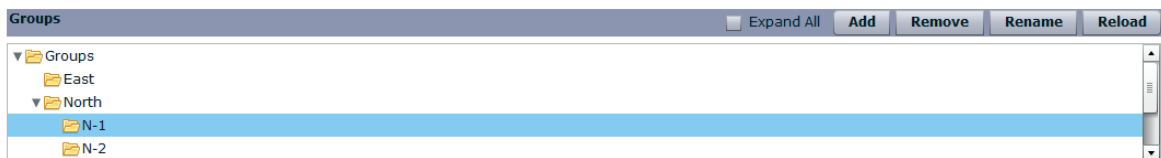
Managing Device Groups

Administrators can use the **Device Group Management** page to create and manage user groups and allocate devices to specific groups. Use the **Add**, **Remove**, **Rename**, and **Reload** functions to create, delete, or rename groups and subgroups.



Basic Functions

The four basic group management functions, **Add**, **Remove**, **Rename**, and **Reload**, are described below:



Function Name	Description
Add	Create a new group or a subgroup under the selected item
Remove	Delete the selected group or subgroup
Rename	Rename the selected group or subgroup
Reload	Refresh the groups listing

Devices

You can use the **Devices** option on the **Device Group Management** page to **View Current Groups** or **View All Devices**.

Device Name	Device MAC	LAN IP Address
OnCell_5104_0001	30:30:30:30:30:31	192.168.127.254
OnCell_5104_0004	30:30:30:30:30:34	192.168.127.254
OnCell_5104_0005	30:30:30:30:30:35	192.168.127.254
OnCell_5104_0002	30:30:30:30:30:32	192.168.127.254
OnCell_5104_0003	30:30:30:30:30:33	192.168.127.254

1 | Total Pages: 1 | Total records: 5 | 20 | Page Number: 1

Viewing Option	Description
View Current Groups	View all the devices in the selected group
View All Devices	View all devices currently registered with OnCell Central Manager

Device Groups

Administrators can add a device to a group provided the device does not already belong to another group. To add a device to a group, select the group from the **Groups** section on the **Device Group Management** page and then click on the **Grouping** button below the section to open the **Select Device/New Device** window.

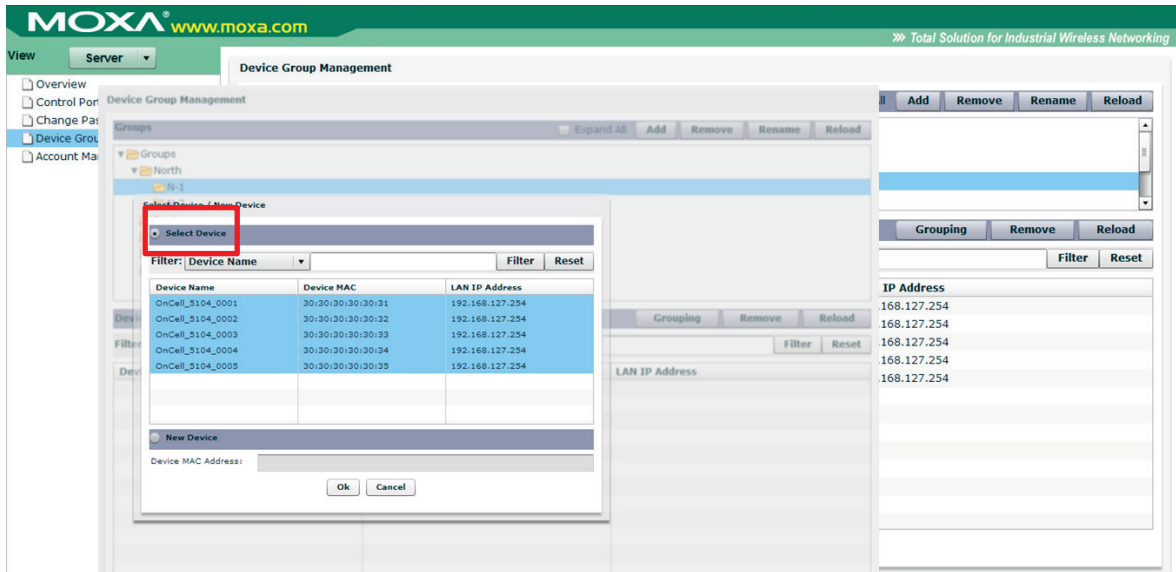
Device Name	Device MAC	LAN IP Address
OnCell_5104_0001	30:30:30:30:30:31	192.168.127.254
OnCell_5104_0004	30:30:30:30:30:34	192.168.127.254
OnCell_5104_0005	30:30:30:30:30:35	192.168.127.254
OnCell_5104_0002	30:30:30:30:30:32	192.168.127.254
OnCell_5104_0003	30:30:30:30:30:33	192.168.127.254

1 | Total Pages: 1 | Total records: 5 | 20 | Page Number: 1

NOTE A device can be part of only one group. You must first remove a device from its current group to be able to add it to another group.

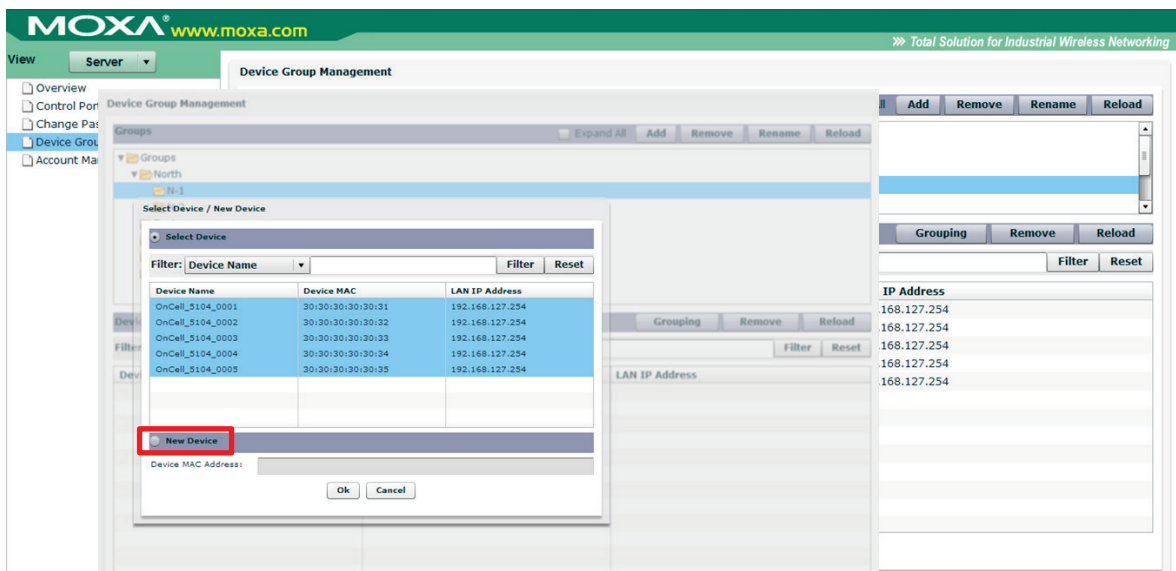
Adding an Existing Device to a Group

You can view the devices that are not assigned to any group in the **Select Device** section of the **Select Device/New Device** window. Select one or more devices and then click **OK** to add the devices to the selected group.



Adding a New Device to a Group

To create a new device object, enter the **Device MAC Address** in the **New Device** section of the **Select Device/New Device** window and click **OK** to add the device to the selected group.



Removing a Device from a Group

To remove a device from a group, select the device and click **Remove**.

Device Group Management

Groups Expand All **Add** **Remove** **Rename** **Reload**

- Groups
 - East
 - North
 - N-1**
 - N-2

Devices **View All Devices** **Grouping** **Remove** **Reload**

Filter: **Device Name** **Filter** **Reset**

Device Name	Device MAC	LAN IP Address
OnCell_5104_0001	30:30:30:30:30:31	192.168.127.254
OnCell_5104_0004	30:30:30:30:30:34	192.168.127.254
OnCell_5104_0005	30:30:30:30:30:35	192.168.127.254
OnCell_5104_0002	30:30:30:30:30:32	192.168.127.254
OnCell_5104_0003	30:30:30:30:30:33	192.168.127.254

1 | Total Pages: 1 Total records: 5 20 | Page Number: 1

Devices **View Current Groups** **Grouping** **Remove** **Reload**

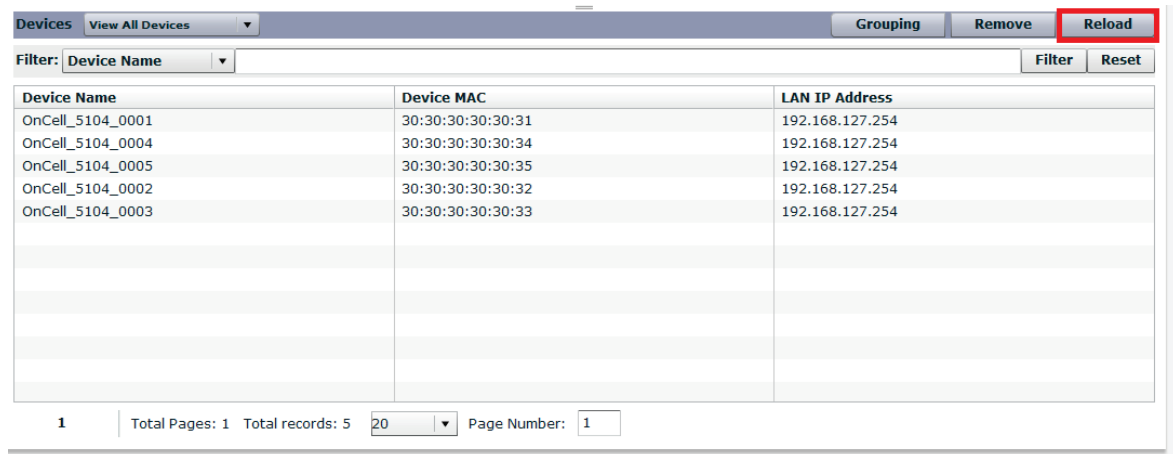
Filter: **Device Name** **Filter** **Reset**

Device Name	Device MAC	LAN IP Address
OnCell_5104_0001	30:30:30:30:30:31	192.168.127.254
OnCell_5104_0004	30:30:30:30:30:34	192.168.127.254
OnCell_5104_0005	30:30:30:30:30:35	192.168.127.254
OnCell_5104_0002	30:30:30:30:30:32	192.168.127.254
OnCell_5104_0003	30:30:30:30:30:33	192.168.127.254

1 | Total Pages: 1 Total records: 5 20 | Page Number: 1

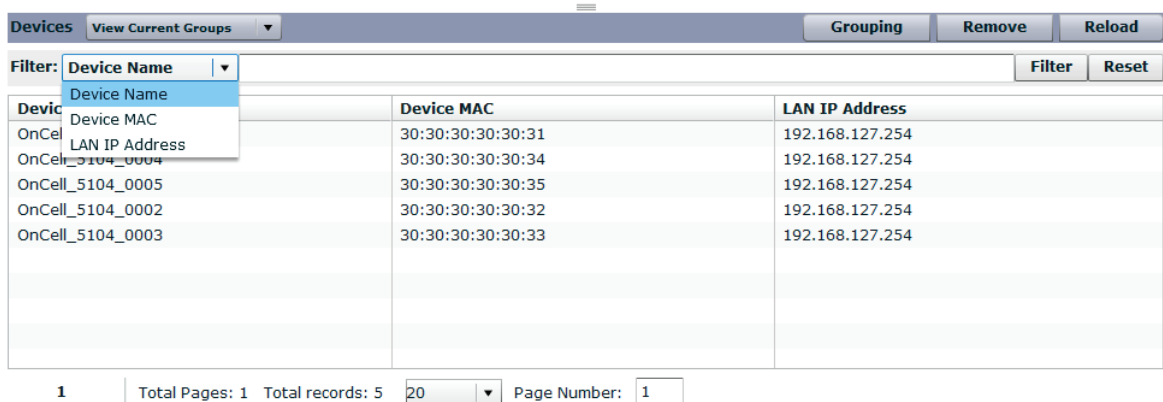
Reloading the Device List

Click **Reload** to refresh the device list.



Device Filter

The **Filter** function allows you to search for devices based on the **Device Name**, **Device MAC**, or device **LAN IP Address**.



Device Name

To filter devices based on a device name, choose **Device Name** in the filter options and input a keyword in the field. Click **Filter** to show the devices that match the device name keyword.

Device MAC

Choose the **Device MAC** option and input a partial or complete MAC address to filter the devices based on their MAC addresses.

Device LAN IP Address

To filter the devices based on their IP address, choose the **LAN IP address** option and key in the complete or partial IP address to filter the devices.

Resetting the Filter

Use the **Reset** button to clear all device filter criteria.

NOTE The information in the above screens is for illustration purposes only. The device parameters of the devices featured depend on the connection status of the devices and the actual network environment.

Managing User Accounts

You can assign different roles to users, give each user account various access levels, and monitor the current status of the user accounts on the **Account Management** page.

Account Management				
User Information				
Login Account	User Name	Role	Parent	Status
admin	admin	Admin	system	enable
user1	user1	Super User	admin(admin)	enable

Accessible Groups

Expand All

- ▼ Groups
 - East
 - ▼ North
 - N-1
 - N-2
 - Other
 - South
 - West

Creating a New User Account

To create a new user account, click on the **Add** button in the **Account Management** page. Specify an **Account** name, assign a role to the user account, specify the parent level, and select the groups to which the user has access rights. Enable the account and click **Ok**.

Account Management

User Information Add Edit Delete Reload

Account: *

User name:

Password: *

Confirm password: *

Role: * Super User ▼

Parent: * admin(admin)-Admin ▼

Enable account: Enable

Groups

- ▼ Groups
 - East
 - ▶ North
 - Other
 - South
 - West

->

<-

Selected Groups

- Selected Groups

NOTE Fields marked with a red asterisk (*) are mandatory.

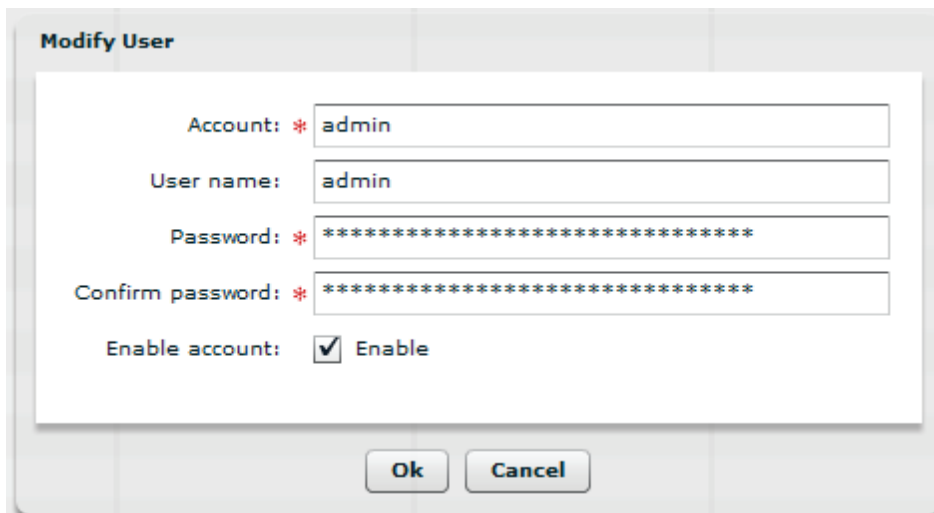
Field	Description
Account	Account name used to log in to OnCell Central Manager
User name	(optional) You may enter a nickname or the user's name.
Password	Password used to log in to OnCell Central Manager.
Confirm Password	Confirm the password by retyping the same in this field
Role	<p>Admin: Can access all groups, devices, and user information.</p> <p>Super User: Can only access subgroups, devices in the subgroup, and user information for users created by this Super User.</p> <p>User: Can only view device information</p>
Parent	The higher level or top administrator of the current account.
Enable account	Check this option to activate the user account.

Modifying User Account Information

On the **Account Management** page, select the user account and click **Edit** to modify the account information.



Update the user information as needed in the **Modify User** window and click **Ok** to apply the changes.



Refreshing User Information

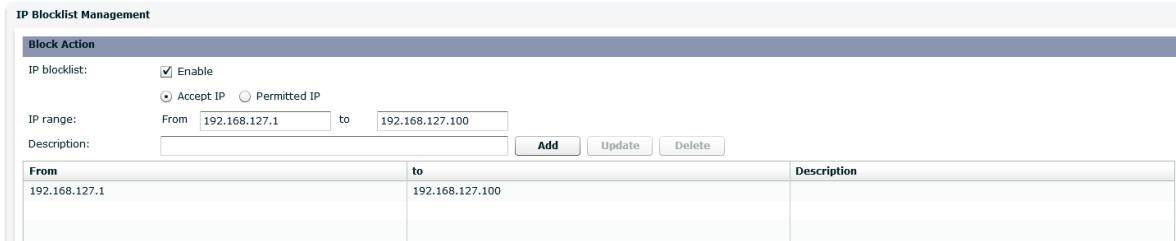
Click **Reload** in the **Account Management** page to refresh the user information.



Managing the IP Blocklist

The **IP blocklist** allows administrators to block communication from specific IP addresses.

To block communication from a specific IP address or a range of IP addresses, Click on the **IP Blocklist Management** link in the **Server** view to define a **Block Action**. Fill in the details and click **Add**.



You can use the **Update** button to update the block action or the **Delete** button to delete an existing block action.

NOTE To further increase security during communication, some OnCell devices can form OpenVPN tunnels. Refer to the user manual for your OnCell device for details on setting up the OpenVPN function.

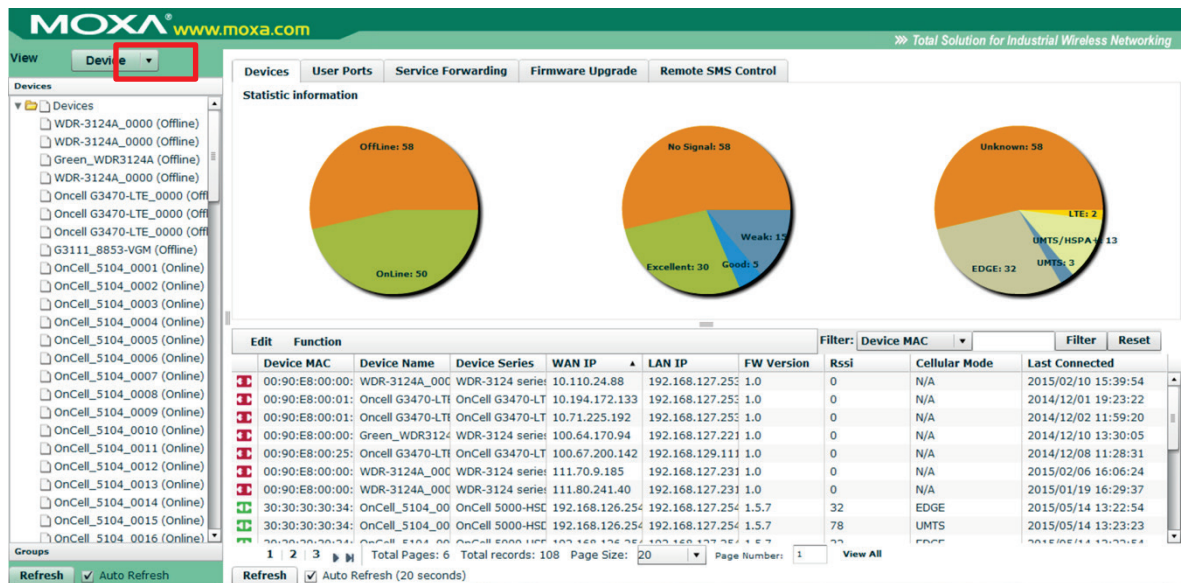
Device Mode

OnCell Central Manager provides a dashboard that displays the connection status, signal RSSI, and cellular mode of connected devices. You can view these details in the **Device** or **Group** view. Click on the various headings (Device MAC, Device Name, etc.) to change the way the information is sorted.

Pass your cursor over the pie charts to view detailed information.

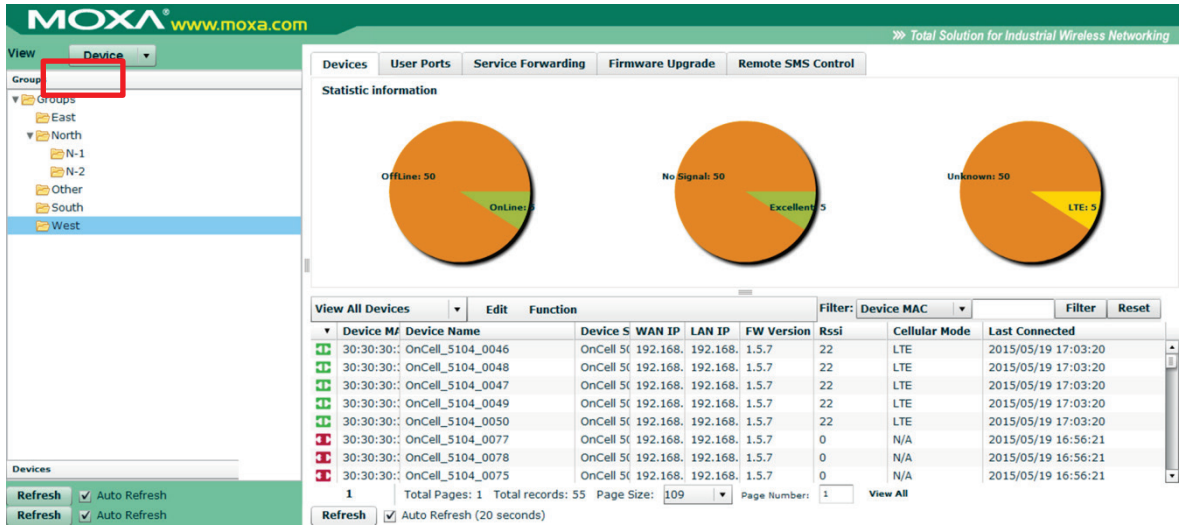
Device View

The **Device** view is selected by default. In the device view, you can view device details, perform batch configuration of devices, and perform firmware upgrades.



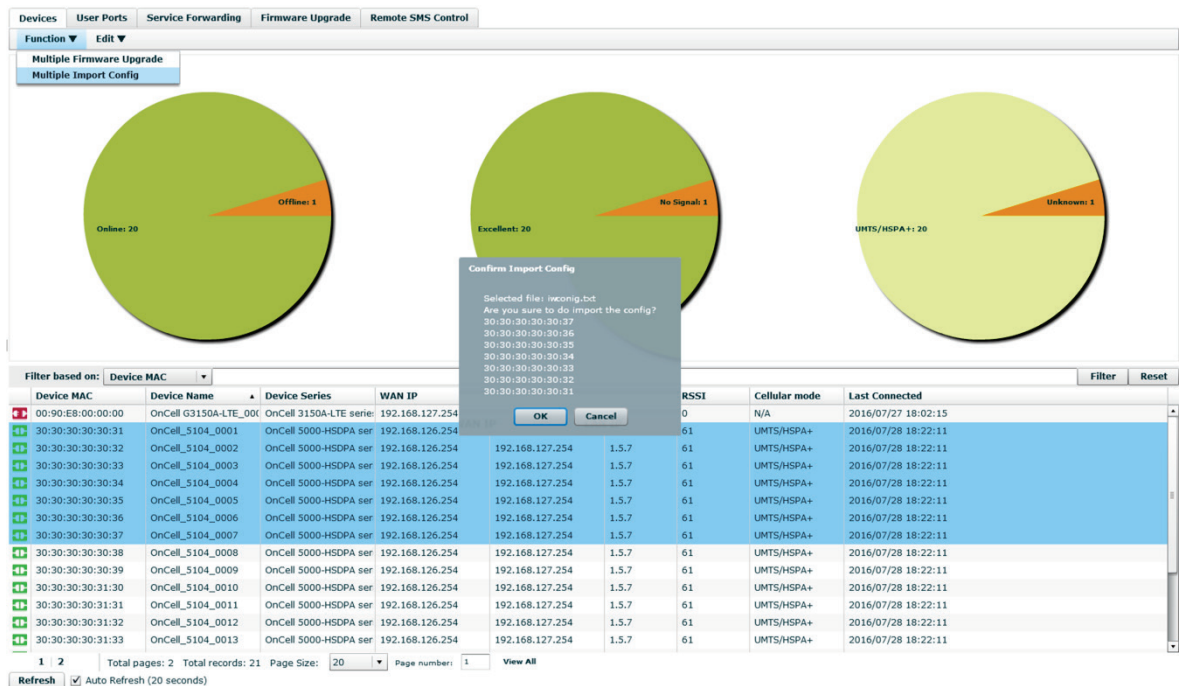
Group View

Click the **Group** option to view information organized by device groups. You can use this view to batch configure device settings in device groups or subgroups.



Batch Configuration and Firmware Upgrade in Devices

You can use the OnCell Central Manager to remotely update firmware on devices and configure devices in batches. Use the **Multiple Firmware Upgrade** or the **Multiple Import Config** options, as applicable, to select the devices or groups to apply the configuration updates and firmware upgrades.



User Ports

In the **Device** mode, click on the **User Ports** tab to display the status details of all ports, including their operation mode and port type (command/data/telnet).

Devices User Ports Service Forwarding Firmware Upgrade Remote SMS Control							
Filter based on: Device Name						Filter	Reset
Port Type	Device Name	Device MAC	Status	OP Mode	Serial Port	Ethernet Port	
Telnet	Green_WDR3124A	00:90:e8:00:00:29	Close	N/A	N/A	60240	
Telnet	Oncell G3470-LTE_000	00:90:e8:00:01:23	Close	N/A	N/A	60241	
Telnet	WDR-3124A_0000	00:90:e8:00:00:73	Close	N/A	N/A	60242	
Telnet	Oncell G3470-LTE_000	00:90:e8:00:25:c3	Close	N/A	N/A	60243	
Command	G3111_8853-VGM	00:90:e8:03:11:12	Close	TCP Server	Port 1	51024	
Data	G3111_8853-VGM	00:90:e8:03:11:12	Close	TCP Server	Port 1	50000	

1 | Total Pages: 1 Total records: 6 Page Size: 20 Page Number: 1 View All

Auto Refresh (20 seconds)

Service Forwarding

Click on the **Service Forwarding** tab to display all ports mapped to OnCell Central Manager with their TCP port status set to service forwarding.

Devices User Ports Service Forwarding Firmware Upgrade Remote SMS Control								
Filter: Device MAC							Filter	Reset
Status	Device MAC	Service Port	Protocol	LAN Device Name	LAN Device IP	Port	Description	
Closed	00:90:E8:00:01:23	52048	TCP	test6666	192.168.127.105	6666	test6666	
Closed	00:90:E8:03:11:12	52049	TCP	Modicon PLC	10.139.64.15	20000		

1 | Total Pages: 1 Total records: 2 Page Size: 20 Page Number: 1 View All

Auto Refresh (20 seconds)

Remote SMS Control (available only on the OnCell G3150A-LTE)

The OnCell Central Manager uses a third-party cloud service from Twilio to send SMS control commands to OnCell devices to remotely reboot the devices, initiate VPN connections, get status information, and perform firmware upgrades.

In the **Device** mode, click on the **Remote SMS control** tab to access the Twilio function. Fill in the **account SID** and **authorized token** and click **OK** to activate Twilio function.

The screenshot shows a dialog box titled "Twilio Configuration" with the following fields and controls:

- Twilio account SID:
- Twilio auth token:
- Remember this account:
- Do not have a Twilio account?:
- Buttons: OK, Register

A group-based view of all the OnCell G3150A-LTE devices is displayed.

The screenshot displays the OnCell Central Manager interface with the "Remote SMS Control" tab selected. On the left, a tree view shows a group named "MOXA_LAB" containing a device "Test1". The main panel shows the configuration for sending SMS commands to a device.

Remote SMS Control Configuration:

- Select Twilio call ID: +14796898335
- Device name:
- Support function: OCM IP change
- Message: @[PASSWORD]@ip.change@[IP]

Device List Table:

Device Name	LAN IP	Last Connected	Device call ID
Liepajas apgaisojums	192.168.1.1	2017/03/27 16:56:43	
OnCell_G3111_NIMERA	193.168.40.114	2017/03/27 16:56:54	
OnCell_G3251_4988	192.168.127.10	2017/03/27 16:56:47	
MOXA_LAB_OnCell_G3111	192.168.127.13	2017/03/27 16:56:45	
OnCell_G3151_8845	192.168.127.11	2017/03/27 16:56:45	
OnCell_G3211_1682	192.168.127.12	2017/03/27 16:56:44	
OnCell_5104_0006	192.168.127.254	2017/03/27 16:56:39	

At the bottom, there are "Refresh" buttons and "Auto Refresh" checkboxes (set to 20 seconds).

Twilio

Twilio is a third-party cloud service provider of SMS messaging service. To use this OCM service, you will require a Twilio account and token. You can click on the **Register** button to register an account with Twilio and retrieve a token. Additional details on Twilio are available at: <https://www.twilio.com/>

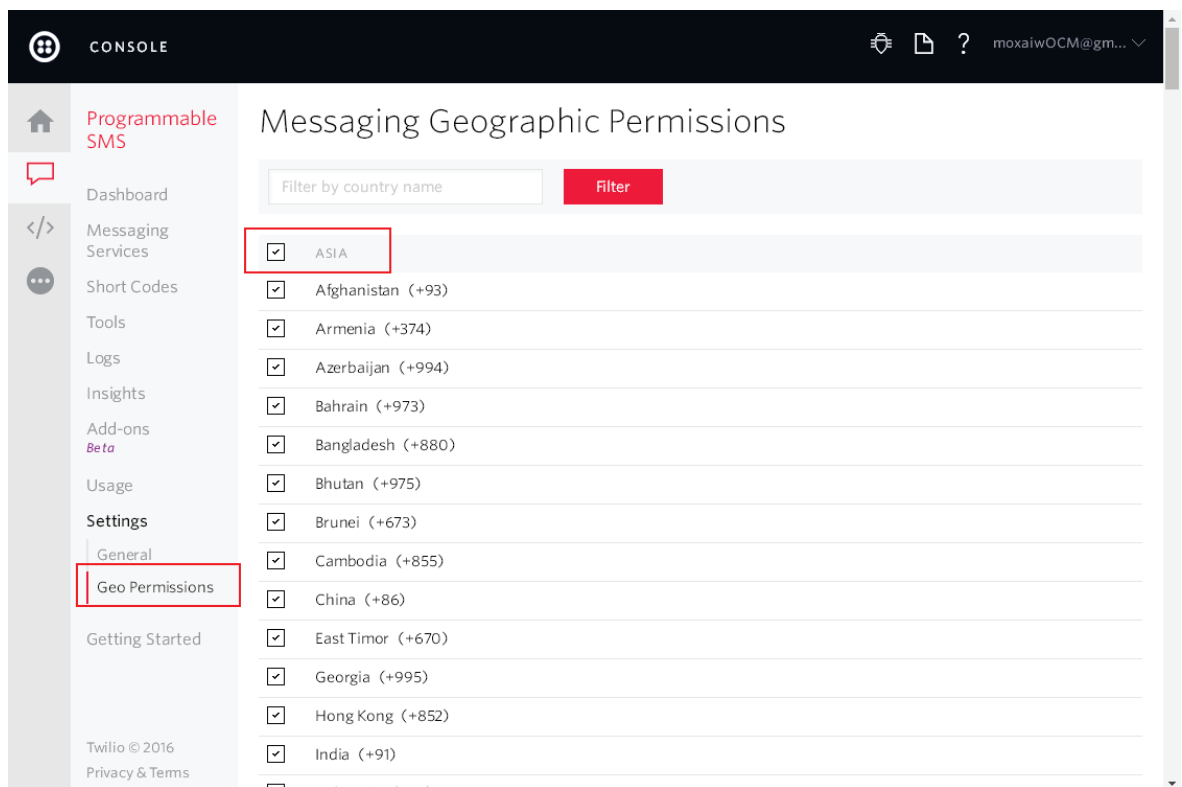
NOTE To enable the Twilio platform to accurately process your SMS messages, make sure you set the correct locale setting (country and region) when you register your account on the Twilio website.



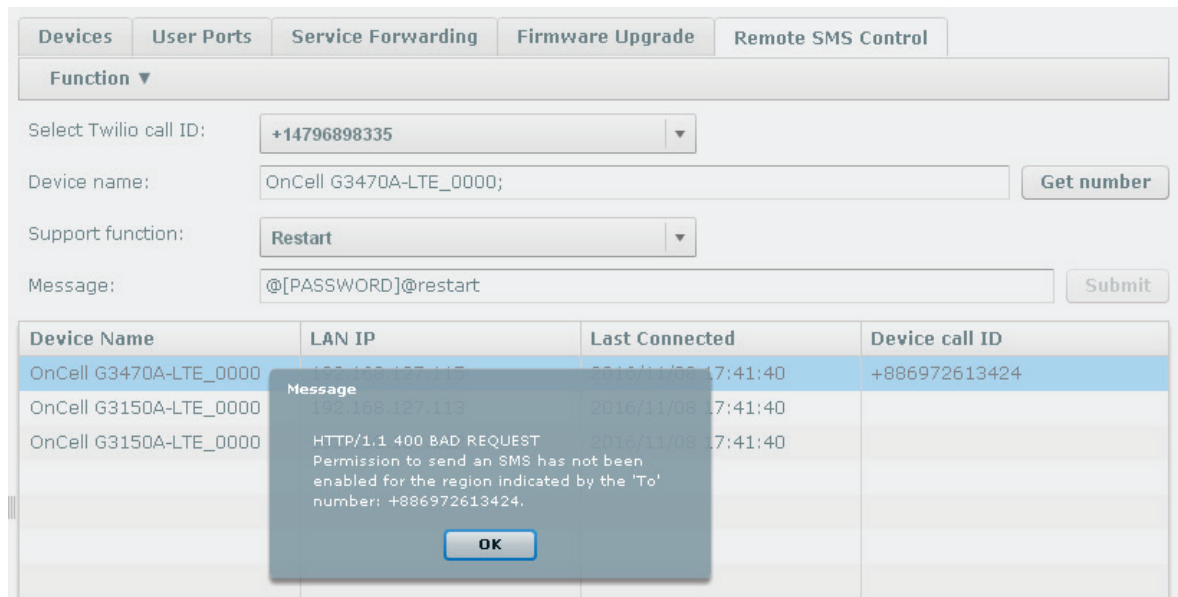
IMPORTANT!

There might be instances where the ISP used by Twilio changes the character "@" to "Δ" when performing remote SMS control commands. If this happens, we suggest that you switch to another ISP to prevent such issues in the future.

If you are sending an SMS message to a Taiwanese ISP whose SIM card is used in the OnCell device, select the ASIA region as shown below. The ASIA region setting includes Taiwan.



If the country/region is not set correctly, it may result in the Twilio system not sending out the SMS messages. The following example shows an error message as a result of a failed transmission of an SMS message because of incorrect location settings.

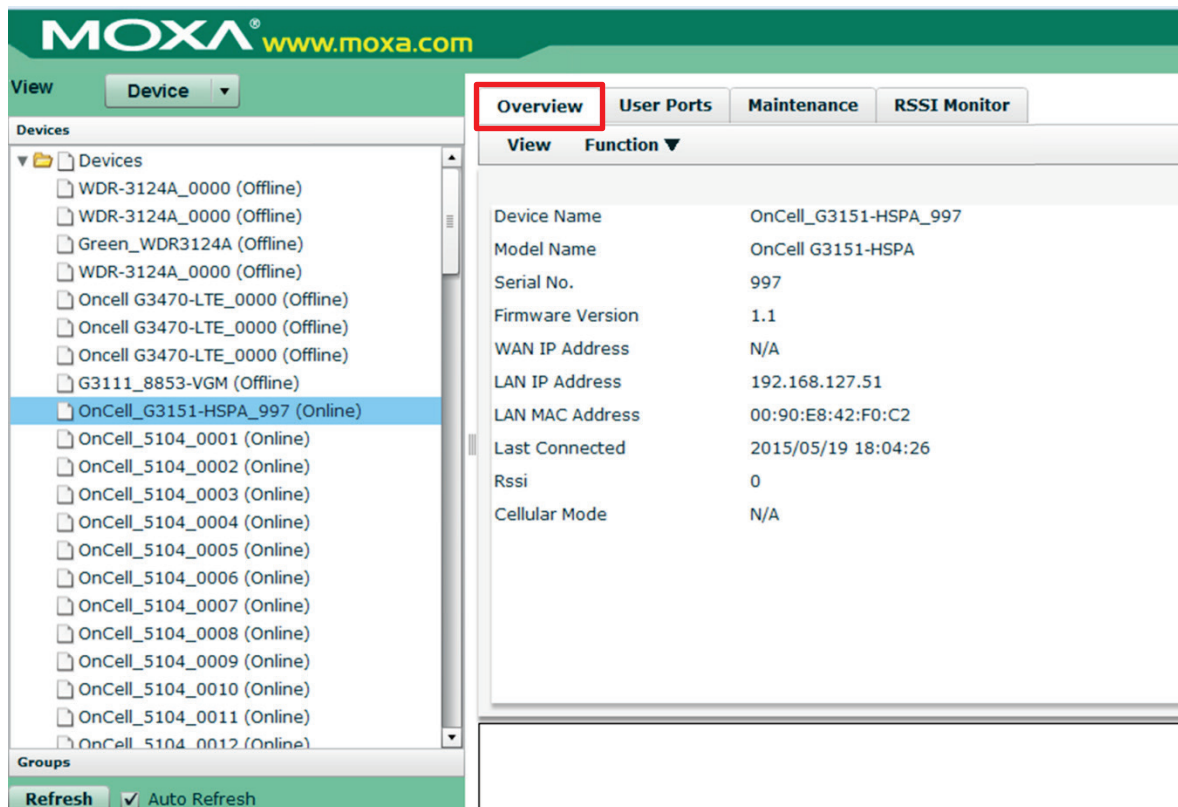


Managing an OnCell Device

Click on a device in the **Devices** list to view and/or manage the information for the device.

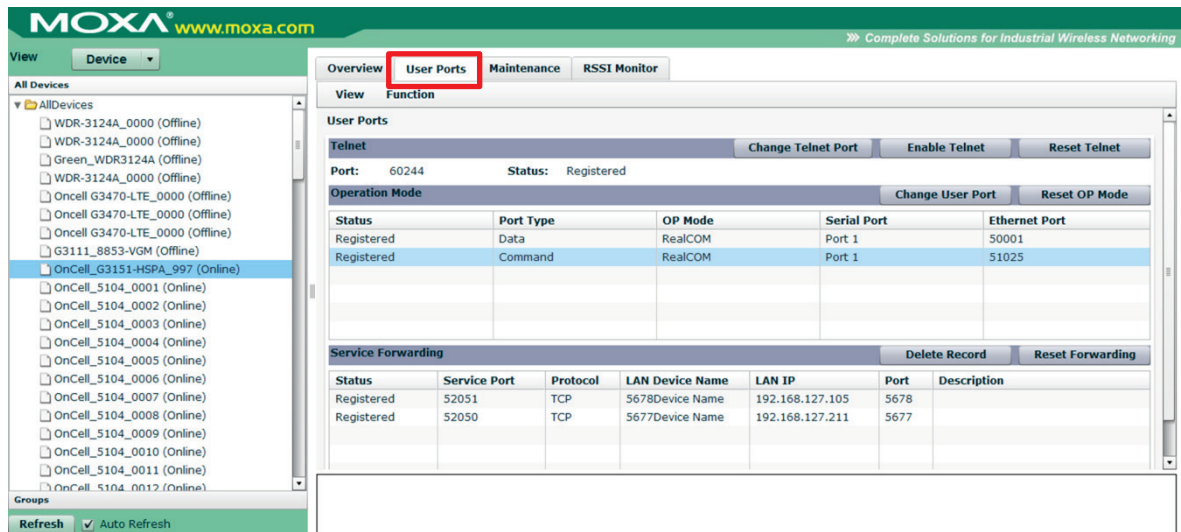
Overview

The **Overview** tab, which displays information for the device, is selected by default.



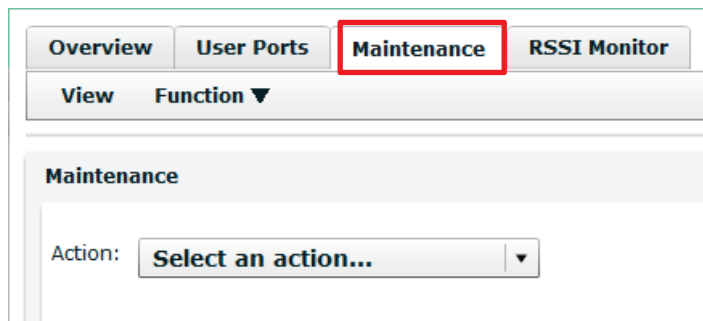
User Ports

The **User Ports** tab allows administrators to manage and monitor specific device ports, including the Telnet, OP mode, and Service Forwarding configurations. The **Service Forwarding** section only allows you to delete records or assign a new forwarding port.



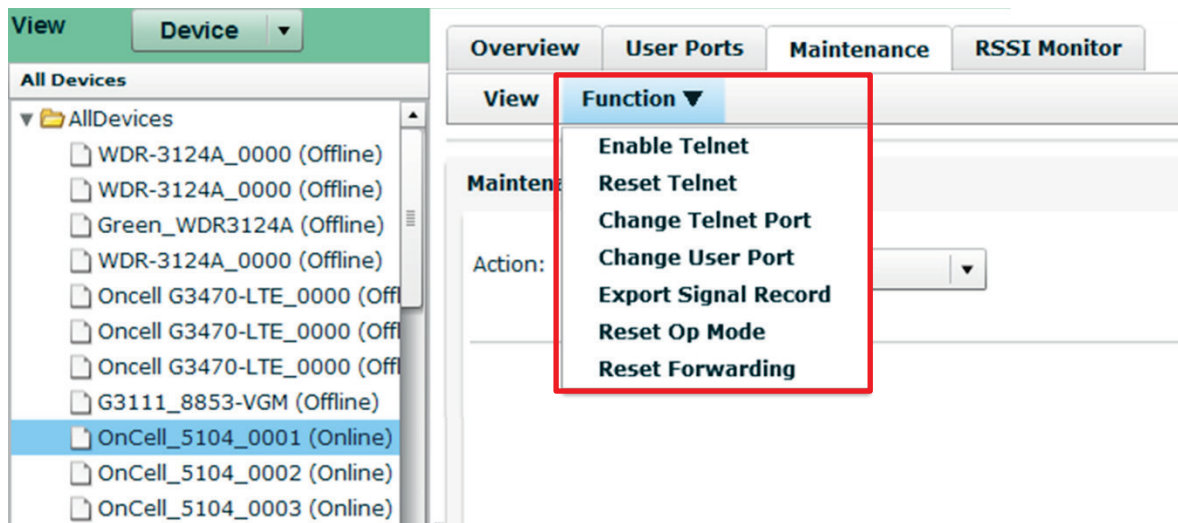
Maintenance

Maintenance functions provide an administrator with tools to manage the Telnet and user ports (configuration and activation), export RSSI signal records, restore an operation mode with service forwarding, export/import configuration, and upgrade firmware.



Function

In the **Maintenance** tab, click on the **Function** drop-down box to view the maintenance functions available.



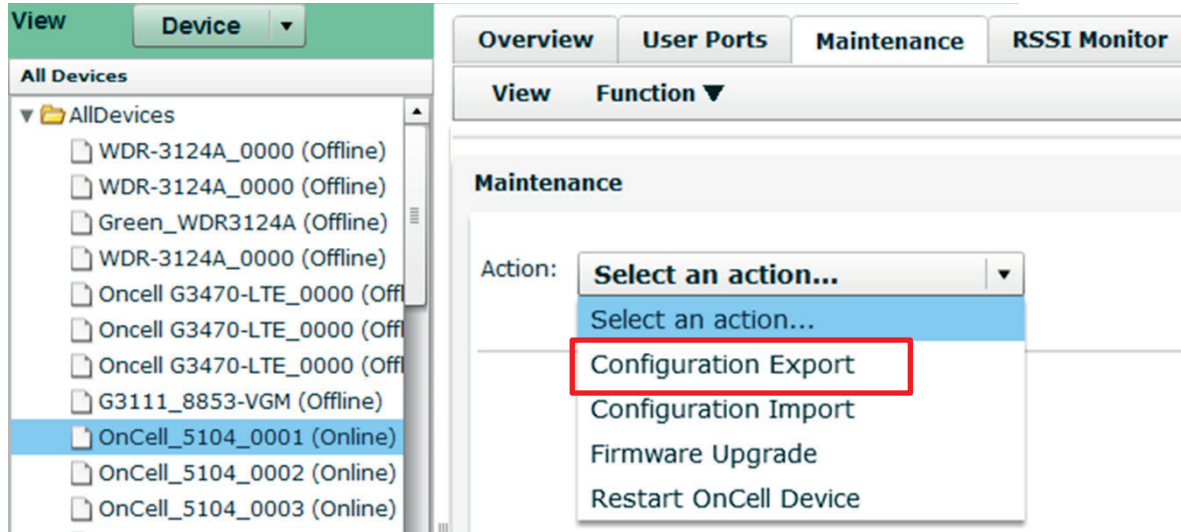
Item	Description
Enable Telnet	Activates Telnet
Reset Telnet	Restores Telnet connection
Change Telnet Port	Used to change the Telnet port number of the device
Change User Port	Used to change the user port number of the device
Export Signal Record	Select an OnCell device and use this option to export RSSI statistics to view the signal history
Reset Op mode	Used to restart the operation mode in the device to restore its connection with OCM
Reset Forwarding	Used to restart the Service Forwarding function in the device to restore its connection with OCM

Action

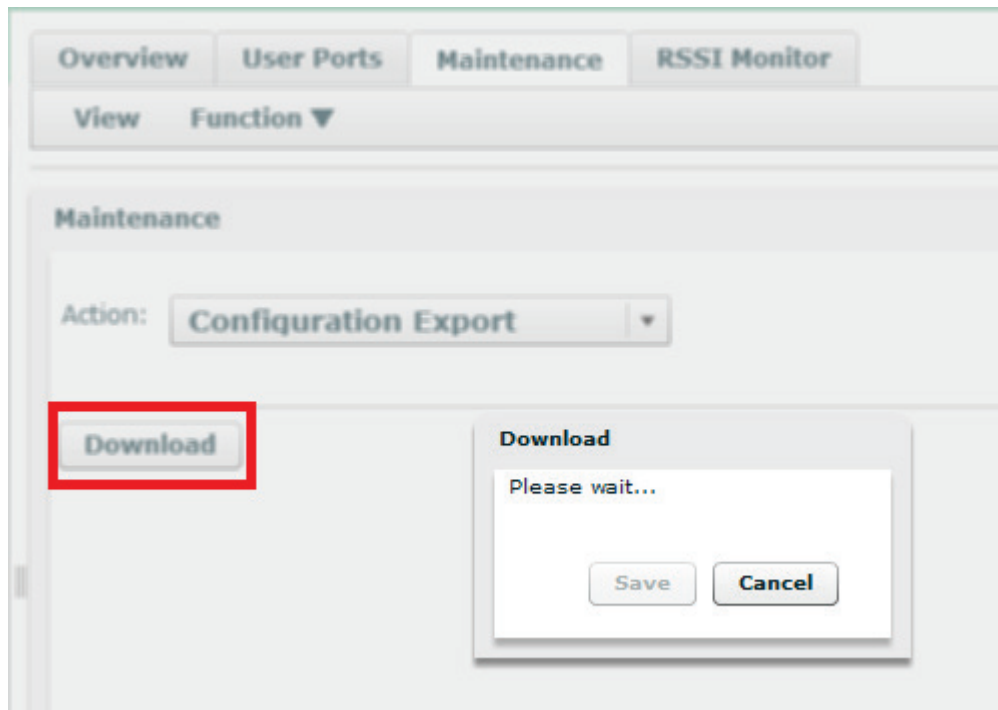
Select one of four actions from the **Action** drop-down list.

Configuration Export

Click **Configuration Export** to back up OnCell Central Manager settings.



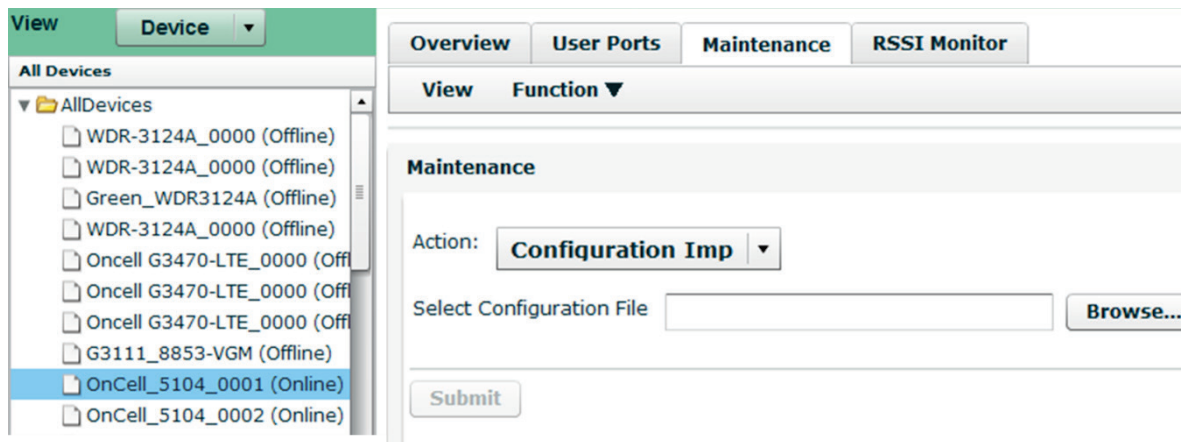
Next, click **Download** to save the configuration settings to a text file (*.conf), which can be viewed and edited with any text-editing tool.



Configuration Import

Click **Configuration Import** to restore the OnCell Central Manager settings using a configuration file.

Next, in the **Configuration Import** section, click **Browse** to select a configuration file, click on the **Open files** button, and click **Submit** to import the configuration.

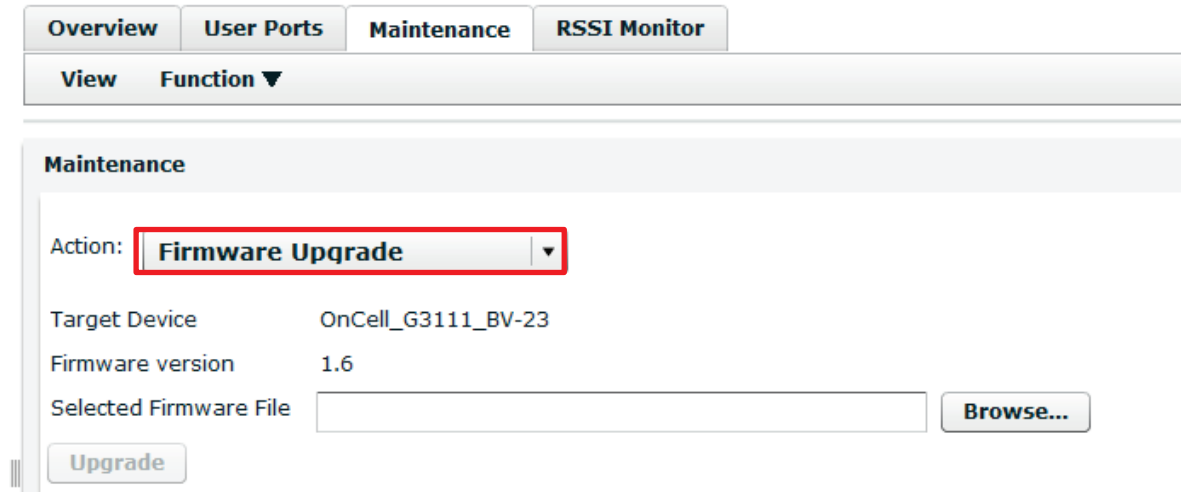


Firmware Upgrade

OnCell Central Manager allows administrators to run a **Firmware Upgrade** deployed at remote sites. The latest firmware is available from Moxa’s download center.

Before running a firmware upgrade, make sure the OnCell device is **off**. Click the **Browse** button to select the firmware image file and click **Firmware Upgrade** to start the firmware upgrade. After the progress bar reaches 100%, the device will reboot itself.

When upgrading your firmware, you cannot use any other functions on the OnCell device.



Restarting an OnCell Device

To restart an OnCell device, click on the **Restart** button in the **Maintenance** tab.



Device Logout

The **Log out** option allows users to disconnect from the OnCell Central Manager. For security reasons, we recommend that you log out before closing the console manager.

